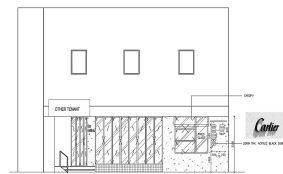




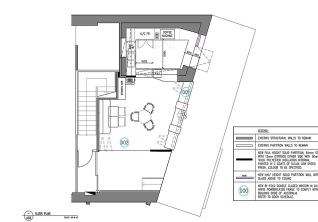
VISUAL PRESENTATION OF CAFE FACADE



VISUAL PRESENTATION OF CAFE FACADE



VISUAL PRESENTATION OF CAFE FACADE



## 2/413 Albany Highway, Victoria Park WA

### KEY INFORMATION

#### Address

2/413 Albany Highway, Victoria Park WA

#### Price

Contact Agent

#### Type

Commercial / Retail

#### Land Area

N/A

#### Build Area

30 sqm

#### Car Spaces

N/A

#### Listing Type

Leased

Fantastic coffee corner located in the heart of Victoria Park is now For Lease.

With options for either a fitted out space or taking over a bare shell, this property offers flexible terms and conditions.

Building Area: 30 sqm Approx.

Current Rent: Contact agent

Available: Now

Contact Jonathan Kilborn or Shannon Swarts to arrange an inspection

### AGENT INFORMATION



**Shannon Swarts**  
ASSOCIATE DIRECTOR

D. 08 9386 9981

M. 0448218629



**Jonathan Kilborn**  
PRINCIPAL/LICENSEE

08 9386 9981

0404 796 137



Level 1, 187 Stirling Highway,  
Nedlands WA 6009  
T (08) 9386 9981

[www.agoraproperty.com.au/property/15125693](http://www.agoraproperty.com.au/property/15125693)

**DISCLAIMER:** The information in this document is prepared for general information purposes only. It should not be relied upon for any purpose. Whilst the information is believed to be correct at the time of publication, it may be derived in part from outside sources (including the seller and/or public records) or based on assumptions. Agora Property Group and/or its officers, employees and agents do not warrant, and accept no liability or responsibility for, its accuracy or completeness.